



Providing HVAC/R Control Solutions Worldwide

5580 Enterprise Pkwy., Fort Myers, FL 33905  
Office: 239-694-0089 Fax: 239-694-0031  
www.mccontrols.com

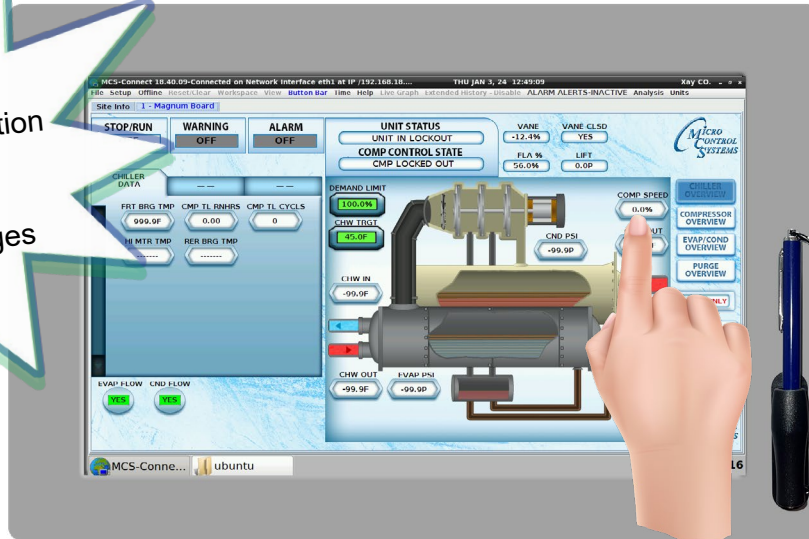
February 6, 2024

For Immediate Release

# MCS-TOUCH-15.4

**New!**

Works outdoors  
UV Degradation Protection  
No Cover Needed  
Water Resistant  
Sharp & Vibrant Images



## **New MCS-TOUCH-15.4 Capacitive Touch Screen**

**coming in early February 2024, replaces the MCS-TOUCH-15.4 Resistive Touch  
Input Method: Finger, Stylus or \*Glove**

- **Highly accurate and does not require calibration - easy to clean - glass surface.**
- **Same format as MCS-TOUCH-15.4 resistive touchscreen, *drops in same cutout.***
- **New - Linux operating system, *supports cap touchscreen and resistive touch screens.***
- Works outdoors, bright screen, ***water resistant.***
- Exceptional Optics - 1280x800 Resolution - ***Sharp and vibrant images.***
- Faster than resistive touchscreens.
- Operating Temperature -22°F to 176°F (-30°C to +80°C).
- Operating Humidity - 90 %RH (Non Condensing).
- The MCS-TOUCH-15.4 comes preloaded with the MCS-CONNECT program that allows you to view the 'unit's status', 'extended history', 'alerts', 'alarms', setpoints, and more, all in a user friendly graphic format.

Capacitive touch screens are control displays that utilize the electrical properties of the human body as input. When a finger (or stylus) comes in contact with the display it detects when and where on the display the user touches it.

Any questions regarding this release, contact [sales@mccontrols.com](mailto:sales@mccontrols.com)

Information contained in this document has been prepared by Micro Control Systems, Inc. and is copyright © protected 2024.

Copying or distributing this document is prohibited unless expressly authorized by MCS.

\* The glove needs to have a conductive fabric or material to work with cap touchscreens.